



How to install your custom designed Wallpaper

Your custom-designed Wall Art has arrived! Your design is provided in panels as shown below. Follow these step-by-step instructions to apply your panels to the Wall, and then show off your work of art- and your handiwork.



Project name : Come a la Cave
Project size : 481.0 x 432.0 cm
Project area : 20.78 sq.m.
Order date : 01/30/2016

Before installation

| | | |
|--------------------|----------------------------------|--|
| What you receive | Wall paper | |
| | Instructions | |
| Tools you may need | Floor Cover | Only if the wallcovering requires water or paste |
| | Step Ladder | |
| | Pencil | |
| | Scissors | |
| | Pasting Brush | Only if the wallcovering requires water or paste |
| | Wallcovering hanging brush | |
| | Sponge | |
| | Tape measure | |
| | Sharp knife | |
| | Spirit Level | |
| | Pasting table | |
| | Bucket of clean water | Only if the wallcovering requires water or paste |
| | Steam stripped & stripping knife | Only if the wallcovering requires water or paste |
| | Priming | Only if the wallcovering requires water or paste |

Wall number: 128404





Step 1

Prepare the wall

Clear furniture and other obstructions from your work area.

It's recommended to paint any other surface desired before starting hanging the wallcovering.

The Wall surface should be clean, smooth, dry and free of debris.

Priming is recommended in the following cases: An old, damaged, or flaking paint job. A Wall with uneven surfaces, such as paneling. Lay out the drop cloth to protect the flooring.

Step 2

Prepare the panels: PRE-PASTED

Loosely roll the panel with the printed side facing in.

Completely submerge the rolled panel in the Wall panel tray long enough to fully wet the panel and activate the adhesive (10 to 15 seconds).¹

Remove the roll by pulling the leading edge out of the tray slowly, glue-side up.

Lay the panel on the floor glue-side up.

The booked strip will now have graphics on both sides with the glue in contact with itself.²

The panel should remain booked for approximately 1 minute.

Un-book the panel. Unfold the top half of the panel, leaving the bottom half of the panel booked.

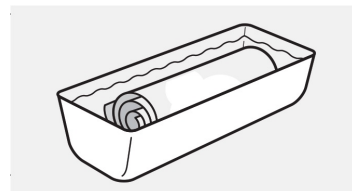


Figure 2

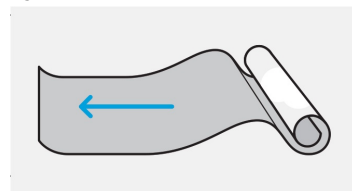


Figure 3

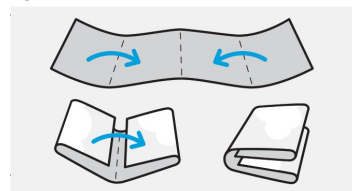


Figure 4

Prepare the panels: PASTE THE WALL

The first step is preparing the paste. This process changes depending on the kind of substrate that you are using.

Always use the paste recommended by the manufacturer. It's really important to follow the mixing instructions in order to have a good consistency.

Apply the adhesive all over the Wall which we are going to cover with the wallcovering using a pasting brush.

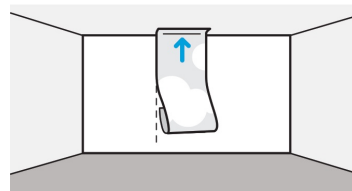


Figure 5

Prepare the panels: PASTE THE PANEL

Always use the paste recommended by the manufacturer. It's really important to follow the mixing instructions in order to have a good consistency..

Be sure that you only apply the paste on the back side of the wallcovering.

It will be easier to spot the surfaces where you didn't apply paste if you use a colored one.

Put your wallcovering face down on the table, so the panel of the wallcovering hangs over the ends of the table.

Load the pasting brush and wipe the excess of paste. Apply the paste from the top to the bottom and from the center to the edges in a herringbone pattern.

Book the media to relax the panel before installation.

Lay the panel on the floor glue-side up.

Fold the glue side against itself. **IMPORTANT:** Avoid creasing paper when booking—it is not necessary for the booked panel to lay perfectly flat.

The booked strip will now have graphics on both sides with the glue in contact with itself.

Repeat the operation with the other panels. Between panels we recommended to wipe the table in order to remove any paste spills.

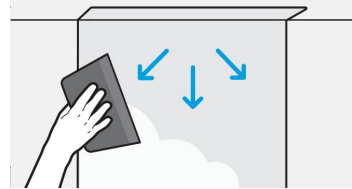


Figure 6

1. if the product is made from natural fiber, it will expand slightly in water, for best results, soak and book each panel the same amount of time.

2. Avoid creasing the paper when booking – it is not necessary for the booked panel to lay perfectly flat.



Step 3

Install first panel

The panel install process is equal for all type of wallcoverings. We recommend hanging the first panel in a part of the Wall without neither doors nor Windows. Start in a corner is also a good option.

Start placing the first panel at the top part, using the vertical line that we draw before as a reference.

Align the horizontal reference guides printed at 5.1 centimeters from the top of the panel with the intersection of the Wall and the ceiling.

Smooth down the paper with the wallcovering hanging brush, working from the top center to the bottom edges, ensuring that there is no air bubbles and that the edge stays on the pencil mark.

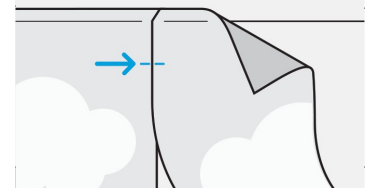


Figure 7

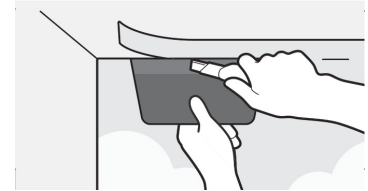


Figure 8

Step 4

Installing the rest of the panels

There are two ways of installing a wallcovering. Overlap and edge-to-edge. Before starting, make sure you know which kind of installation requires your wallcovering..

Overlap: Once the first panel is correctly hanged, start hanging the following panels, taking as a reference the first panels and its crosshair marks. Panel should overlap by 0.0 centimeter; make sure that you match the two crosshair markings at eye level. Smooth down the wallcovering in the same way you did with the first panel.

Edge-to-edge: Once the first panel is correctly hanged, start hanging the following panels, taking as a reference the first panel edge. Place the following panel edge at the same level of the previous panel edge. Make sure you match the print of the two panels at eye level.

Step 5

Trimming and finishing

Cut away excess material around an object (e. g. Window or door)

Using a straightedge, push the panel flush against the Wall and into the joint/intersection between the Wall and your door or window.

Using a straightedge and the same technique used to trim around objects, trim the edge of the Wall Art along the ceiling, the baseboard, and Wall edges.

Use the straight edge as a guide and cut away the overlapping material with a Sharp utility knife. TIP: The knife blade must be Sharp to prevent tearing, fresen the blade frequently

Step 6

Hanging wallcovering around light switches or sockets

Uninstall the fitting cover

Hang a panel over the fitting and smooth it very gently over it.

Make a hole in the wallcovering where the center of the fitting is placed with the scissors.

Remove the wallcovering surplus from the fitting. Be careful when removing it, and never exceed the fitting cover size.

Mount again the fitting cover.

1. If the product is made from natural fiber, it will expand slightly in water, for best results, soak and book each panel the same amount of time.
2. Avoid creasing the paper when booking – it is not necessary for the booked panel to lay perfectly flat.



NOTES:

The install instructions are a brief explanation about how to install “pre-pasted”, “paste the paper wallcovering”, and “paste the Wall” wallcoverings. For other kind of wallcoverings, follow the instructions delivered by the wallcovering manufacturer

© Copy right 2013, 2016 HP Development Company, L.P. The information contained herein is subject to change without notice. The only warranties for HP products and services are set forth in the express warranty statements accompanying such products and services. Nothing herein should be construed as constituting an additional warranty. HP shall not be liable for technical or editorial errors or omissions contained herein.